

# Barefoot luxe

Teresa and Anthony Ralph transformed an overgrown plot into a magical coastal haven for their beach-loving family

**Love**  
TERESA'S  
STYLE?

Turn to page 93  
to shop the look





**Sitting area**

Built-in cabinetry with sliding doors hides the TV and provides a neat, spacious storage zone.

**BUY THE KEY PIECES**

Scott sofas, £999 each, Made.  
Sputnik chandelier, £499, West Elm

**SUPERSIZE IT**  
A large coffee table serves as a footstool or extra seating when the house is full of people



# Welcome to my home



Teresa Ralph and her husband, Anthony, who are both property developers, have two children, Zachary, 15, and Scarlet, 14.

## THE PROPERTY

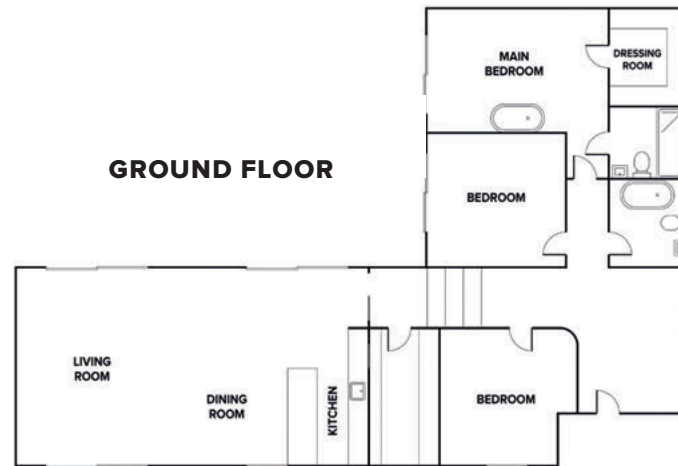
A detached single-storey three-bedroom new build in Kent.

## THE VALUE

The plot was bought for £200,000 and the house cost £600,000 to build. Now worth £1,275,000.

*“We wanted a serene interior, but it had to withstand wet towels and sandy feet”*

## Take a quick tour...



Finding a rare parcel of land for sale on the Kent coastline was a dream for Teresa and Anthony Ralph. ‘Many individual plots had been carved up on the North Foreland Estate and people clamour to buy these uncomplicated lots, but we were drawn to an unloved piece of land which was the only one with views of the beautiful lighthouse,’ says Teresa.

The land included a tiny gardener’s cottage and once the overgrown plants had been cleared, the couple were excited by the true size of the space. ‘We rethought our initial plans about just renovating the tumbledown cottage, and put in planning permission for a second, contemporary single-storey dwelling on the site, oriented towards the lighthouse. At first, this was refused, but permission was granted on appeal.’

Inspiration for the contemporary design came from a mix of shared memories and the family’s love of the beach lifestyle. ‘Holidays spent in funky, low-lying

properties that evoke calm were at the forefront of our design. Privacy and personal spaces are super important to us, so the design had to reflect that,’ Teresa says.

Their plans to keep both properties changed when Covid struck and they needed the funds to complete the new build. ‘We’d hoped to be able to rent out the cottage and live in the new house, but lockdown forced us to sell the cottage to allow us to finish the second property.

The family moved into their new home just in time to enjoy the long, hot summer of 2020. ‘It was amazing. The proximity to the beach, plus the evenings in the garden lit up by the lighthouse made our home feel like a secret hideaway,’ says Teresa. ‘However, as Covid escalated again in the winter, we had to make the tough decision to sell our home in order to regroup.’

Teresa remains positive about their experience. ‘Anthony and I will definitely seek another special plot to recreate all of these magical things again.’



### ***Sitting area***

Keeping the colour scheme simple gives the room a clean, contemporary look. 'Adding green tones in the form of furniture and accessories echoes the greenery of the garden and is such a calming colour,' Teresa says.

#### **BUY THE KEY PIECES**

Jangala leaf motif cushion, £24, Made, is similar

**LOW PENDANT**  
Swap a table lamp for a stylish long drop pendant light

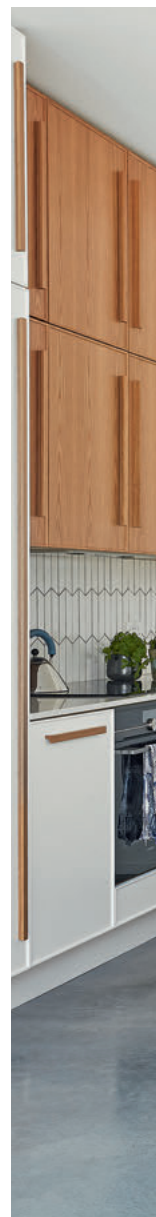




## Kitchen

The polished concrete floor unifies the large kitchen, dining and sitting room space. 'The oak cabinetry acts as a softening contrast and adds an organic feel,' Teresa says.

**BUY THE KEY PIECES** Flooring, price on request, Contemporary Concrete Floors







**ZONING TIP**  
Pendant lights create definition between spaces within an open-plan room

## Kitchen

Combining a storage bench with the island created the space for a large dining table.

### BUY THE KEY PIECES

Kitchen cabinetry, from £34,500 for a similar design, 3 Planks. Woven pendant light, £274, Nkuku

## Hallway

The chic low corner bench in the hall doubles as a place to change out of wet shoes and a quiet reading nook.

**BUY THE KEY PIECES** Designed by 3 Planks, price on request. Similar metal frame wall mirrors, £60 each, John Lewis & Partners

*“This house is the ultimate place to hunker down to recharge from the chaos of the outside world and is a stepping stone to exploring this beautiful part of the coast”*







**WINDOW TREATMENT**  
Hanging the curtains to one side gives them a modern twist

## Main bedroom

'We built a bench seat in the window – it's a peaceful place to sit and read with the window open,' Teresa says.

### BUY THE KEY PIECES

Besley kingsize bed, £349; Genka rug, 249, both Made. Magnolia pink velvet quilted bedspread, £80, Dunelm, is similar

## Bathroom

An oversized cabinet with practical mirror doors maximises the space and keeps surfaces clutter free.

### BUY THE KEY PIECES

Cabinetry, price on request, Creative Carpentry. Tirol tiles (in shower), £126sq m; Triangolo tiles in Glossy White (bath panel and under sink), £129.60sq m, both Rovic Tiles. Aura stone resin wall-hung basin, from £390, Lusso, is similar

**“Our inspiration came from holiday memories of light, low-lying properties that evoke calm with private areas for adults and children alike”**



### Main bedroom

A freestanding bath is a luxurious addition to this tranquil room. 'We built a neat recess in the wall for candles and toiletries and lined it with oak to match the window seat,' Teresa says.

#### BUY THE KEY PIECES

Affine Roubaix freestanding bath, £599, Plumbworld, is similar. Bath taps with hose and head, £535, Smallbone Interiors

**OAK FRAME**  
Wood adds warmth and creates a feature window in the bedroom







**COLOUR POPS**  
Green surfaces  
and bright  
accessories lift  
the scheme

### Study

An independent home office includes a kitchenette, WC and shower. 'A long wall of seamless desk space is made from ply with green laminate to add a vibrant touch. Lots of storage and the polished concrete floor keep the office functional and robust,' Teresa says.

**BUY THE KEY PIECES** Office chairs, £150 each, Ikea. Anglepoise Type 75 mini table lamps, £99 each, John Lewis & Partners

### Study entrance

The Ralphs chose a large glazed statement door to make the most of the natural light and stimulate creativity in the office. 'The pivot design allows the door to swing open naturally, bringing in positive energy from the garden,' says Teresa.

**BUY THE KEY PIECES** Bespoke door, £5,000, Rhino Aluminium. White glazed exterior bricks, price on request, MKM Building Supplies

## WHAT WE'VE LEARNED

*“Lockdown restrictions made us seek out local craftsmen and suppliers, which turned out to be a bonus. It was easier and felt good to support local businesses”*



FEATURE CAROLINE FOSTER PHOTOGRAPHS CHRIS SNOOK FLOOR PLAN RJH SURVEYING