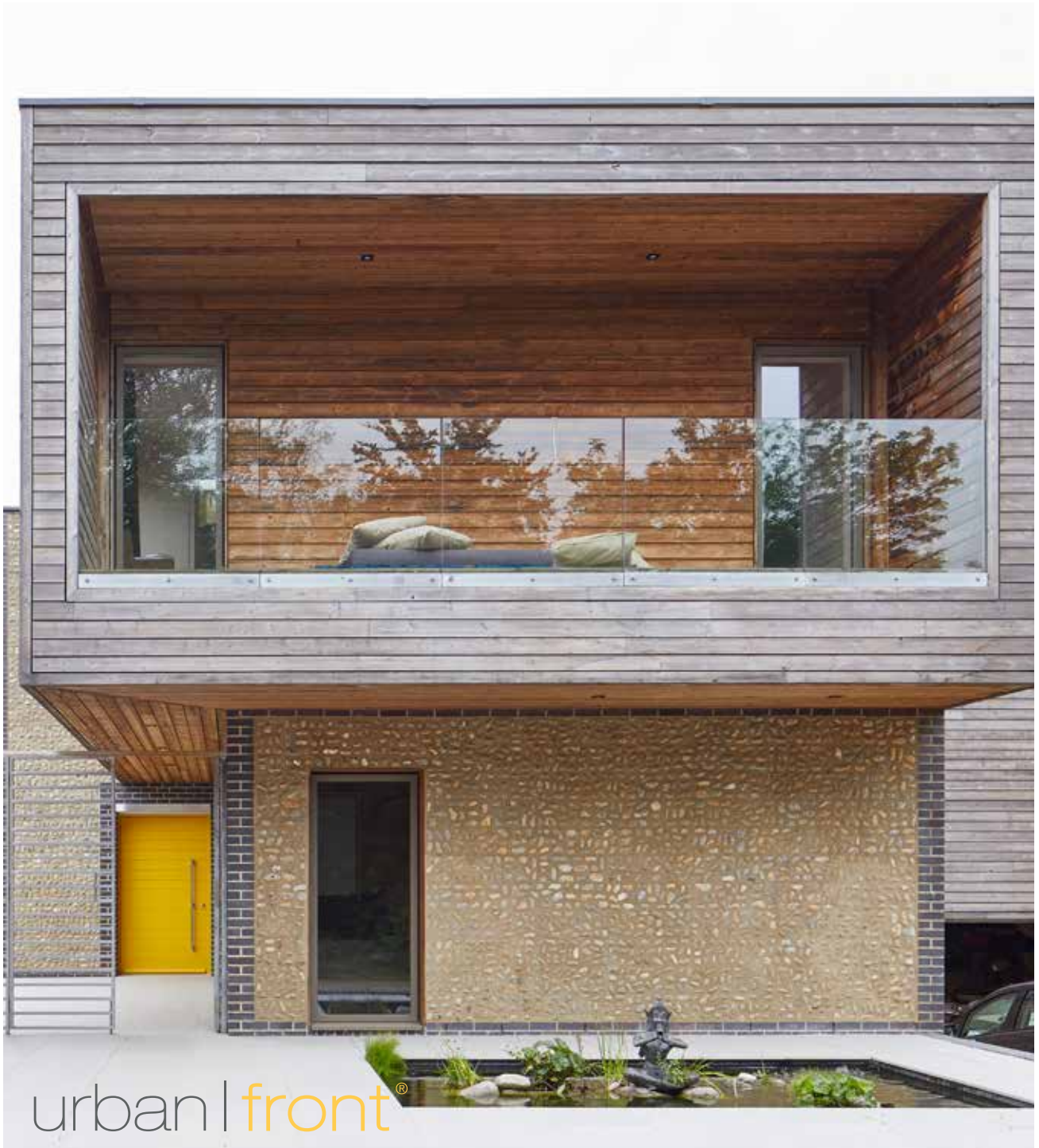


doorcouture

MAKING AN ENTRANCE EDITION



urban | front®

SPOTLIGHT ON: SHOU SUGI BAN®



Lana Harrison
Exterior Solutions

Lana, Managing Director of Exterior Solutions talks to us about the art of Shou Sugi Ban®.

CHARRED TIMBER CLADDING

When architects aim to achieve a high-end finish that delivers a strong aesthetic and robust functionality, they need specialist suppliers. Exterior Solutions Ltd is a family-run business in Buckinghamshire. Their Shou Sugi Ban® charred timber cladding is a market leader.

Shou Sugi Ban® cladding and Urban Front doors have both featured in several projects. These include House 19, a 2016 RIBA South Award-winning property.



THE ART OF TIMBER PRESERVATION

Across Europe, the preservation of timbers used in construction has been achieved with a coating of oil, varnish, paint or creosote. These treatments enhance the natural strength and resilience of the material, extending its lifespan.

In Japan, the traditional preservation technique is a controlled charring process called Yakisugi. Rather than a surface application, Yakisugi alters the cell structure. The outer layer, which is at greatest risk of damage by fire, burrowing insects and exposure to moisture is burnt away. This reveals cells with increased strength and durability.

INTRODUCING SHOU SUGI BAN®

The team at Exterior Solutions Ltd learnt this Japanese preservation technique. With respect to tradition, a variety of timbers and finishes were trialled and tested. From the textured crackle of Kitai, an Medite Tricoya Extreme, to the defined grain of Shiberiatora, a heavy-brushed larch, the Shou Sugi Ban® cladding range was created.

For a modern twist, the use of colour was also explored and coloured charred timbers are now produced for clients. The subtle peacock shade of Karafurutaiga charred larch is highly desirable.

WHAT TYPE OF BUILDINGS SUIT CHARRED TIMBER CLADDING?

Blackened cladding timbers delivers a stylish finish to contemporary architecture, including House 19, designed by Jestico & Whiles. Along with urban residences, Shou Sugi Ban® has been the material of choice for public buildings. These include the Willowbrook Pavilion at Eton College and The Ivy in Spinningfields.



Equally, this traditional technique lends itself to the renovation of heritage buildings. From barn conversions to Nottingham Castle, Shou Sugi Ban® blends into its surroundings.

THREE BENEFITS OF CHARRED TIMBER CLADDING

Aesthetic and functional, there are many reasons to opt for quality cladding, including:

- Modern architecture has to address active and passive energy-efficiency. Beyond the realms of Building Regulations, there is a duty to the client and the environment for buildings to have a low-carbon impact. Timber is naturally insulating, so Shou Sugi Ban® supports these objectives.
- Unlike paint or varnish, which cracks and peels, charring is long-lasting. This makes it a low-maintenance solution.
- Shou Sugi Ban® is an FSC and PEFC certified product. Sustainable timbers from managed forests are sourced from local sawmills. Offcuts can be used for other joinery projects, including garden benches and planters or chipped for mulch.

For further information visit shousugiban.co.uk or call 01494 711800.



TERESA RALPH - TG DESIGNER HOMES

Teresa is co-founder of Tgdesignerhomes with her husband Anthony. Working closely with their team and young, innovative designers, they are creating inspiring, spacious developments using the highest quality materials and craftsmanship. Based in Kent the team currently has several sites under construction throughout the South East.

WARMTH AND ROBUSTNESS

An entrance door and hall take the most traffic in any house. It's where people take off their boots and shoes, shake off wet coats, and towel down dogs and children coming back from exciting walks, or a busy day at school. Therefore the materials chosen need to be striking enough to welcome you home day after day and robust enough to take the daily wear and tear of families or busy individuals coming in and out with sand, mud, equipment Or indeed just bare feet. Oak is inherently a warm and comforting wood that we feel is a great palette contrast to polished concrete which we like to use on our floors. Peoples' perceptions of concrete can be of a cold material – even though it is beautifully warm underfoot in the winter and cool in the summer – but we find oak is the perfect visual antidote for people to fall in love with a simple scheme. We then continued to balance the palette with natural materials such as rattan and jute to keep the colour scheme the same but offer some beautiful textures to add layers and depth to the look.

www.tgdesignerhomes.co.uk



01. Porto e98 pivot flush door with concealed handle in European Oak urbanfront.com fr £8975+ VAT

02. London brick tile - Tilesdirect.com £27 sqm2 03. Concrete light- lights.co.uk

04. Rust House Number - housesignsdirect.co.uk £28 05. Pair of King Sago Palms - www.gardenexpress.co.uk £80

06. Heavy Duty Grass Paver TruckPaver - matsgrids.co.uk £10.20 each

07. Oak Bench - charliecaffynfurniture.co.uk fr £2208 08. White glazed bricks - mkmb.co.uk £850 per pack

